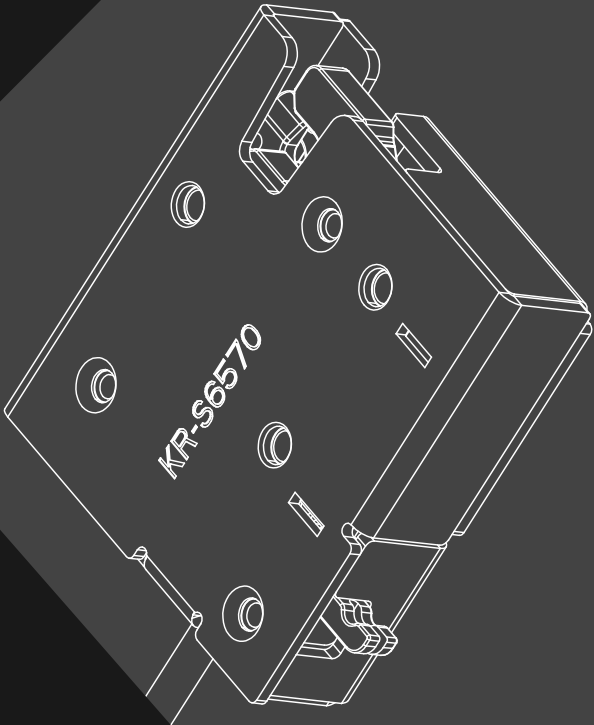


Professional manufacturer of locker locks



KENRONE

Hotline: +86-755-28396063

Mobile: + 86-13420991032

Email: betty@kerong.hk

Address: 3rd Building,68# Tongli Road, Tongle
Community, Baolong Street, Longgang
District, Shenzhen, Guangdong, China

Zip code: 518116

Product Catalogue

Parcel Locker Locks

T E C H N O L O G Y I N T O L I F E



COMPANY INTRODUCTION

Professional manufacturer of locker locks

Guangdong
Shenzhen

KENRONE established in 2002, is a professional manufacturer specializing in the R&D, production, sales service of electronic locks, intelligent locker systems, digital cabinet locks and other related security products.

Over these years, KENRONE has consistently focused on products development and personal training of all staffs, including product technology and personal qualities, to achieve integrated development. We know how to constantly keep developing competitive products and keep pace with the times to meet the demand of most users.

At the same time, continuously invest in the most advanced technology and equipment, maintain relevant product technology training of all staffs, enables us to go from strength to strength, make our staffs more and more professional. Creating an unique business mode with strong and comprehensive marketing and after-sales service support network.

KENRONE always dedicated to quality control and customer service. Our R&D team can provide a complete solution. We also welcome OEM and ODM orders.



We will serve you wholeheartedly and hope to be one of your friends and business partners.





ENTERPRISE CERTIFICATES





OUR R & D TEAM

KENRONE always adheres to the professional innovation of product as it is core competitiveness. And regards technology research and development and personnel training as the goal of company.



OUR SALES TEAM

Our sales staffs are trained with the latest comprehensive techniques, this enables us to go from strength to strength, create an unique business model with comprehensive and professional marketing and after-sales support network.



Production Training



Quality supervision



Production Workshop

OUR PRODUCTION

Our employees are trained with professional techniques. Each part of the production is strictly in accordance with the operation instructions and process managements. Also with regular training to ensure product quality, and all products need to meet the safety and environmental requirements of each country.





FACTORY SCENE

At present, KENRONE production workshop has nine standardized production lines. With professional testing equipment, such as tensile strength test machine, salt spray test machine, vibration test machine, etc. We uphold attitude towards product excellence, products undergo professional quality control system.

To make sure products customers got can work, we also has a strong and comprehensive after-sale support network to protect customers' after-sales service benefits!



Welding Workshop



Assembly Workshop



PCB Warehouse



Aging Test

PRODUCTION EQUIPMENT



EXPRESS LOCKER LOCK

Suitable for multiple application scenarios



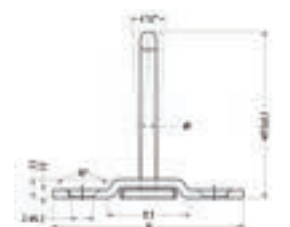
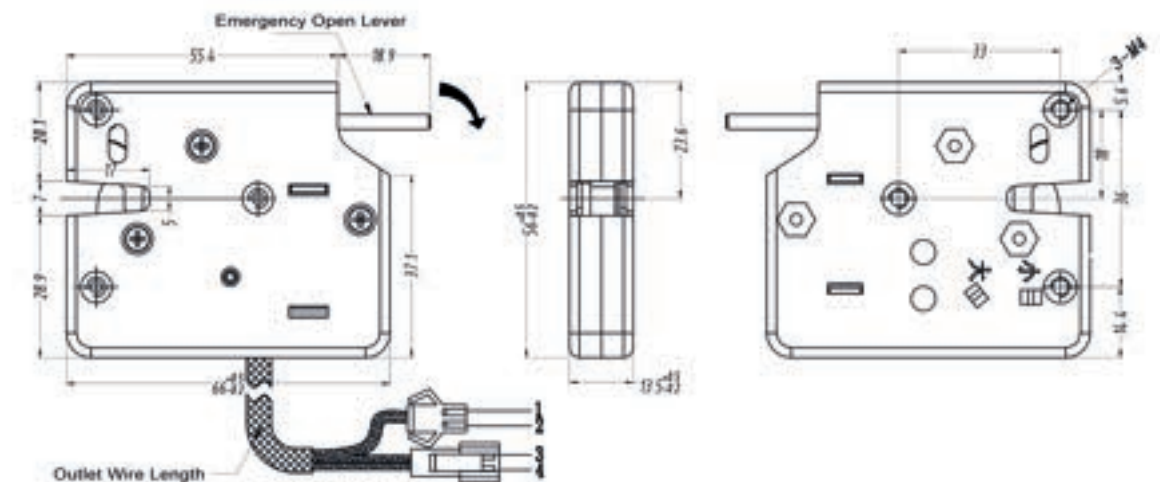
Technology into life
Professional manufacturer of locker locks

KENRONE

10

KR-S66

- AWG24 wires with PVC protecting tube.
- Solenoid driven, support 12V&24V.
- Anti-force performance as 250kgf.
- Omron detective switch from Japan, working life as 500,000 times.
- Mechanical emergency lever, can be unlocked manually in case of power failure.
- Support customizing wires and connectors.
- 430 stainless steel lock shell, Zinc Alloy lock tongue, can pass more than 48 hours salt spray test.



Movable Lock Hook

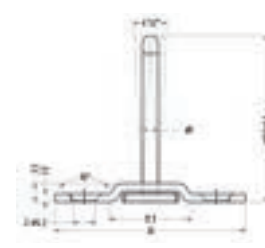
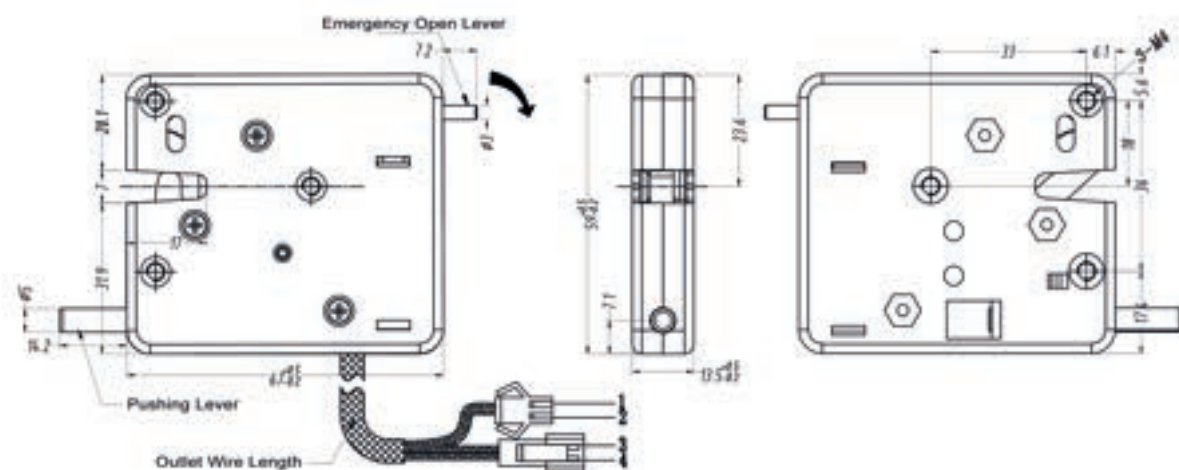
Material of lock body	430 Stainless steel
Material of lock tongue	Zinc Alloy
Surface treatment	/
Door weight	0.5KG-10KG
Working voltage	12V & 24V
Working current	2.4A / 1.2A
Maximum power	28W
Working temperature	-20°C ~+60°C
Working humidity	5%-85%RH





KR-S66N

- AWG24 wires with PVC protecting tube.
- Solenoid driven, support 12V&24V.
- Anti-force performance as 250kgf.
- Omron detective switch from Japan, working life as 500,000 times.
- Mechanical emergency lever, can be unlocked manually in case of power failure.
- Support customizing wires and connectors.
- 430 stainless steel lock shell, Zinc Alloy lock tongue, can pass more than 48 hours salt spray test.
- Push lever help push door open also can be removed.



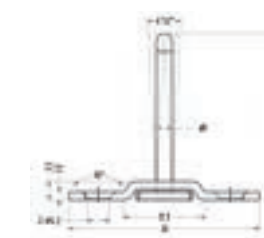
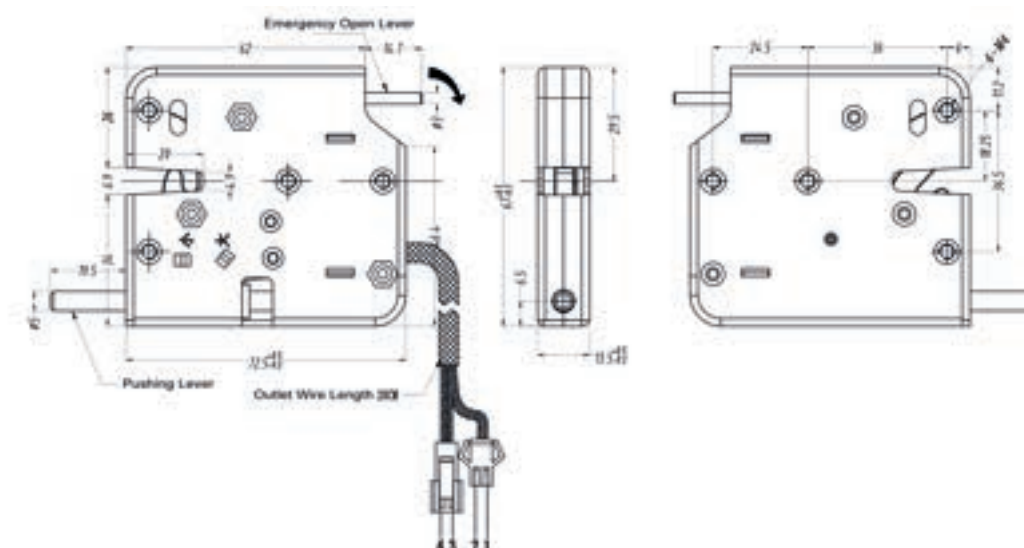
Movable Lock Hook

Material of lock body	430 Stainless steel
Material of lock tongue	Zinc Alloy
Surface treatment	/
Door weight	0.5KG~10KG
Working voltage	12V / 24V
Working current	2.4A / 1.2A
Maximum power	28W
Working temperature	-20°C ~+60°C
Working humidity	5%~85%RH



KR-S99

- AWG24 wires with PVC protecting tube.
- Solenoid driven, support 12V&24V.
- Anti-force performance as 250kgf.
- Omron detective switch from Japan, working life as 500,000 times.
- Mechanical emergency lever, can be unlocked manually in case of power failure.
- Support customizing wires and connectors.
- 430 stainless steel lock shell, Zinc Alloy lock tongue, can pass more than 48 hours salt spray test.



Movable Lock Hook

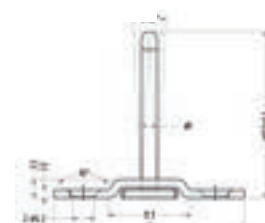
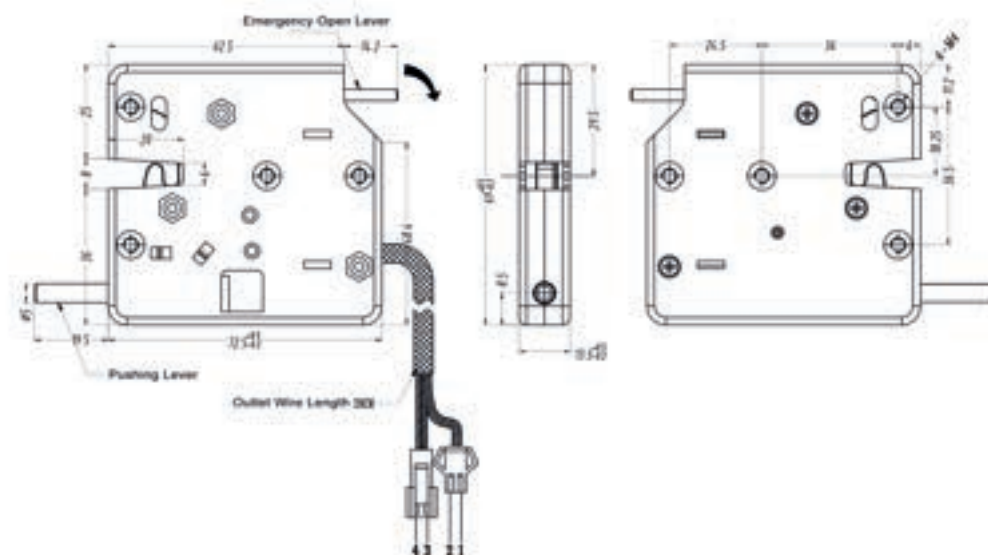
Material of lock body	430 Stainless steel
Material of lock tongue	Zinc Alloy
Surface treatment	/
Door weight	0.5KG~10KG
Working voltage	12V & 24V
Working current	2.4A / 1.2A
Maximum power	28W
Working temperature	-20°C ~+60°C
Working humidity	5%~85%RH





KR-S99N

- AWG24 wires with PVC protecting tube.
- Solenoid driven, support 12V&24V.
- Anti-force performance as 250kgf.
- Omron detective switch from Japan, working life as 500,000 times.
- Mechanical emergency lever, can be unlocked manually in case of power failure.
- Support customizing wires and connectors.
- 430 stainless steel lock shell, Zinc Alloy lock tongue, can pass more than 48 hours salt spray test.



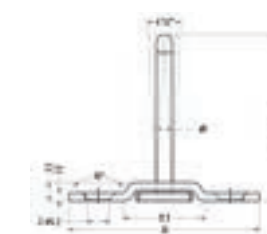
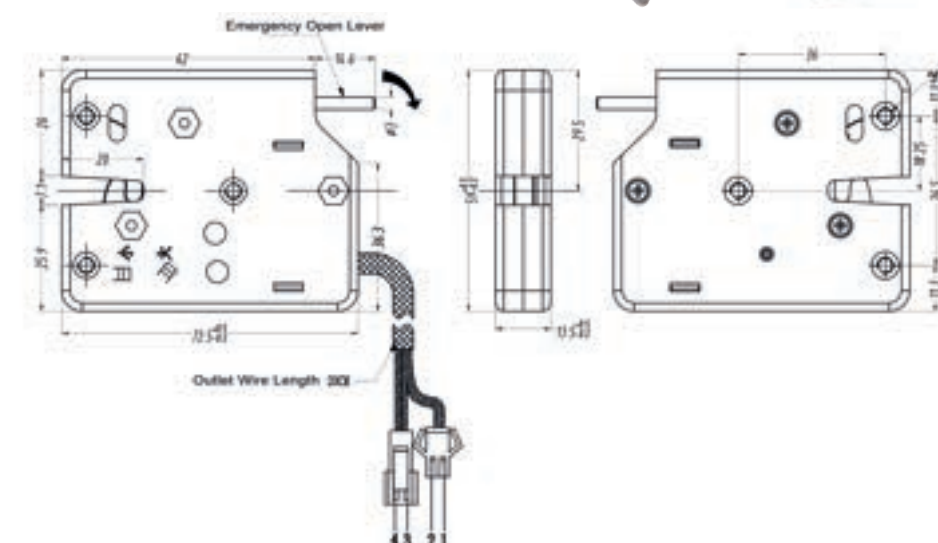
Movable Lock Hook

Material of lock body	430 Stainless steel
Material of lock tongue	Zinc Alloy
Surface treatment	/
Door weight	0.5KG~10KG
Working voltage	12V & 24V
Working current	2.4A / 1.2A
Maximum power	28W
Working temperature	-20°C ~+60°C
Working humidity	5%~85%RH



KR-1408

- AWG24 wires with PVC protecting tube.
- Solenoid driven, support 12V&24V.
- Anti-force performance as 250kgf.
- Omron detective switch from Japan, working life as 500,000 times.
- Mechanical emergency lever, can be unlocked manually in case of power failure.
- Support customizing wires and connectors.
- 430 stainless steel lock shell, Zinc Alloy lock tongue, can pass more than 48 hours salt spray test.



Movable Lock Hook

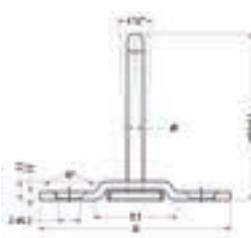
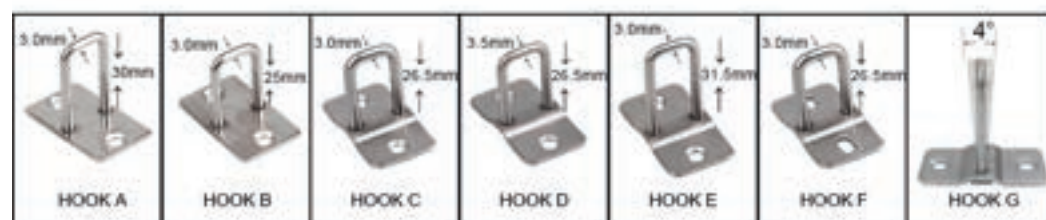
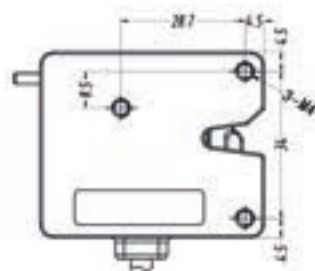
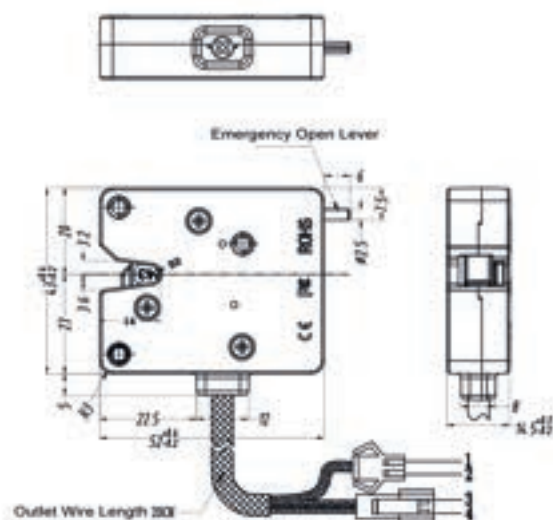
Material of lock body	430 Stainless steel
Material of lock tongue	Zinc Alloy
Surface treatment	/
Door weight	0.5KG~10KG
Working voltage	12V & 24V
Working current	2.4A / 1.2A
Maximum power	28W
Working temperature	-20°C ~+60°C
Working humidity	5%~85%RH





KR-S5243

- Solenoid drive, support 12V & 24V.
- AWG24 wire with PVC protective tube.
- Support custom wires and connectors.
- The compact structure design allows more application space for the locker.
- Japan Omron micro probe switch, high quality, durable. The service life is 500,000 times.
- Safety: The lock shell is made of zinc alloy and will not have obvious permanent deformation.
- Different lock hooks are suitable for different locker designs, and customized services can be provided.



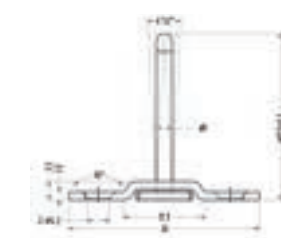
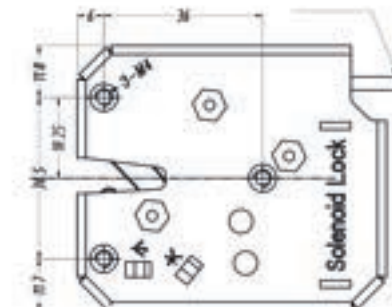
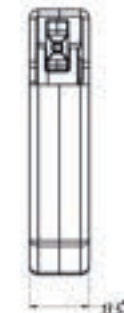
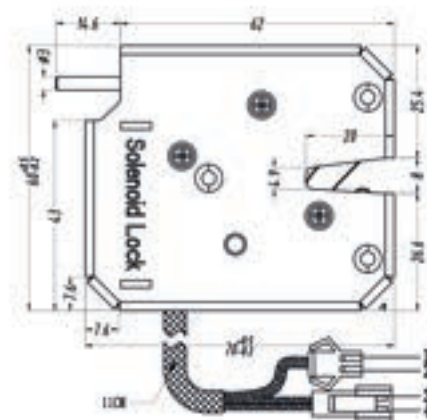
Movable Lock Hook

Material of lock body	Zinc Alloy
Material of lock tonque	Zinc Alloy
Surface treatment	/
Door weight	0.5KG~10KG
Working voltage	12V & 24V
Working current	2.4A / 1.2A
Maximum power	28W
Working temperature	-20℃ ~+60℃
Working humidity	5%~85%RH



KR-S6070

- Solenoid driven, support 12V & 24V.
- AWG24 wires with PVC protecting tube .
- Support customizing wires and connectors.
- Detective switch from China, detect the opening and closing of the lock.
- The compact structure design allows more space for the storage cabinet.
- Different lock hooks suit for different locker design,customizing service is available.
- Security:Lock shells , made from Carbon steel plated with blue zinc, won't obvious permanent deform permanently.



Movable Lock Hook

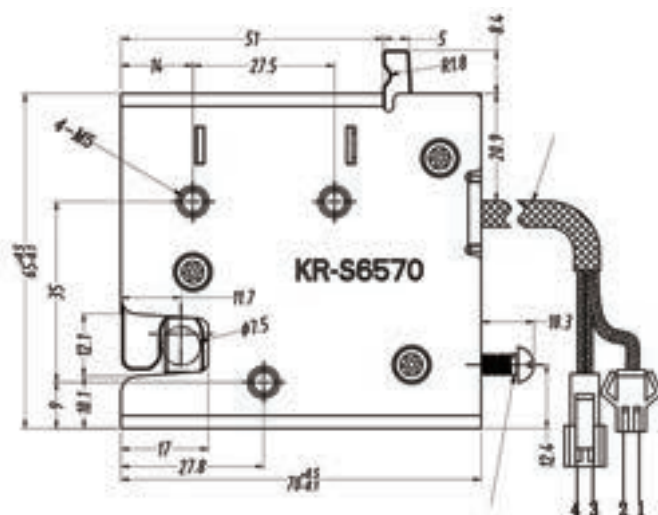
Material of lock body	Carbon steel plated with blue zinc
Material of lock tonque	Zinc Alloy
Surface treatment	/
Door weight	0.5KG~10KG
Working voltage	12V & 24V
Working current	2.4A / 1.2A
Maximum power	28W
Working temperature	-20°C ~+60°C
Working humidity	5%~85%RH





KR-S6570

- Solenoid drive, support 12V&24V.
- AWG24 wire with PVC protective tube.
- Support custom wires and connectors.
- Japan's Omron switch has a long service life and detects the opening and closing of the lock.
- Equipped with an emergency unlocking lever, which can be manually unlocked in an emergency.
- Different lock hooks are suitable for different locker designs, and customized services can be provided.
- The lock shell is made of 304 stainless steel, and there will be no obvious permanent deformation.

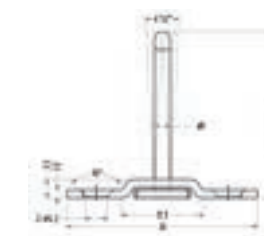
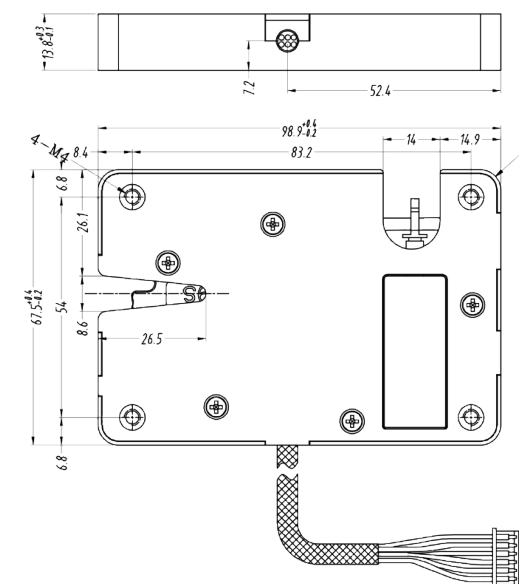


Material of lock body	304 Stainless steel
Material of lock tonque	Zinc Alloy
Surface treatment	/
Door weight	0.5KG~10KG
Working voltage	12V & 24V
Working current	2.4A / 1.2A
Maximum power	28W
Working temperature	-20°C ~+60°C
Working humidity	5%~85%RH



KR-S99S

- Solenoid driven, support 12V & 24V.
- AWG24 wires with PVC protecting tube .
- Support customizing wires and connectors.
- Function: Push door detection to open the lock
- Different lock hooks suit for different locker design,customizing service is available.
- Omron micro detective switch from Japan, high quality and durability.500,000-time working life.



Movable Lock Hook

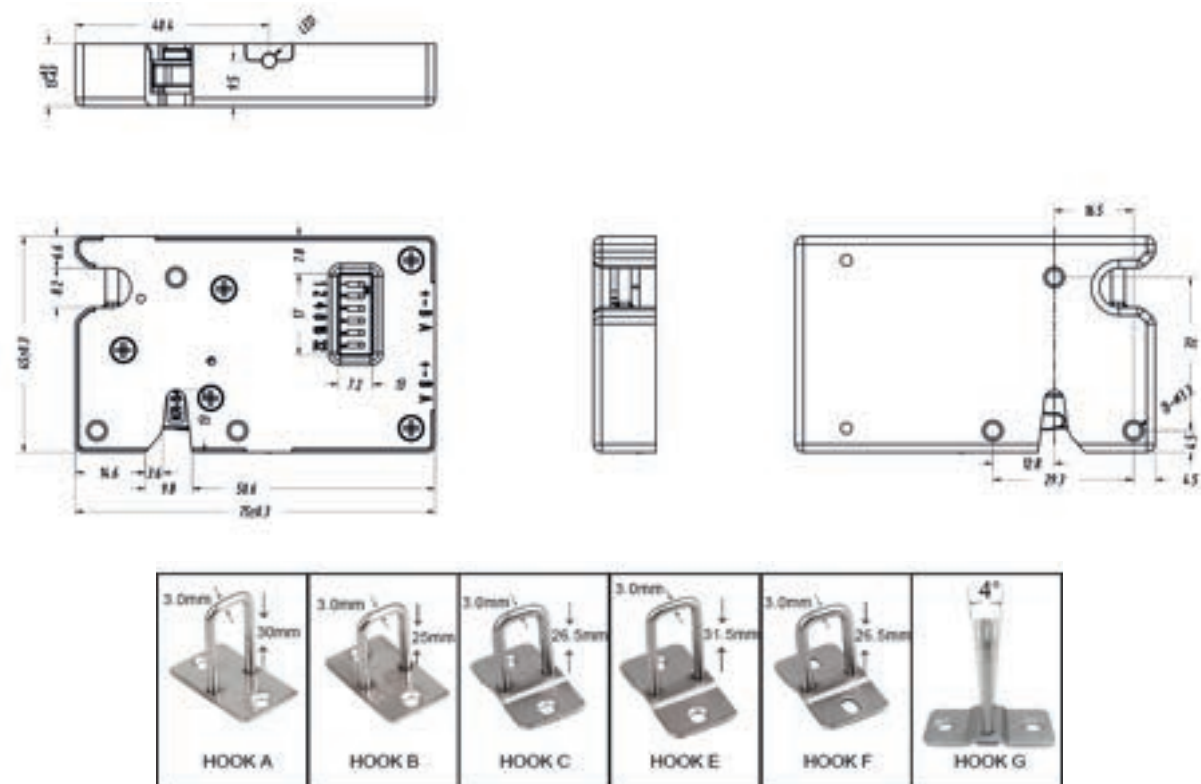
Material of lock body	430Stainless steel+(PA+GF)
Material of lock tonque	Zinc Alloy
Surface treatment	/
Door weight	0.5KG~10KG
Working voltage	12V & 24V
Working current	2.4A / 1.2A
Maximum power	28W
Working temperature	-20°C ~+60°C
Working humidity	5%~85%RH





KR-S4575

- Get the status of the lock in real time
- AWG24 wire with PVC protection tube
- Support custom wires and connectors
- With lock hook detection and push block detection
- High-strength steel structure: can withstand high mechanical loads
- Support series connection, can open 64 locks at the same time
- Convenient mechanical override, which can be manually released in case of power failure.
- Built-in Omron micro switch for latching on/off output signal, with a service life of 500,000 times.

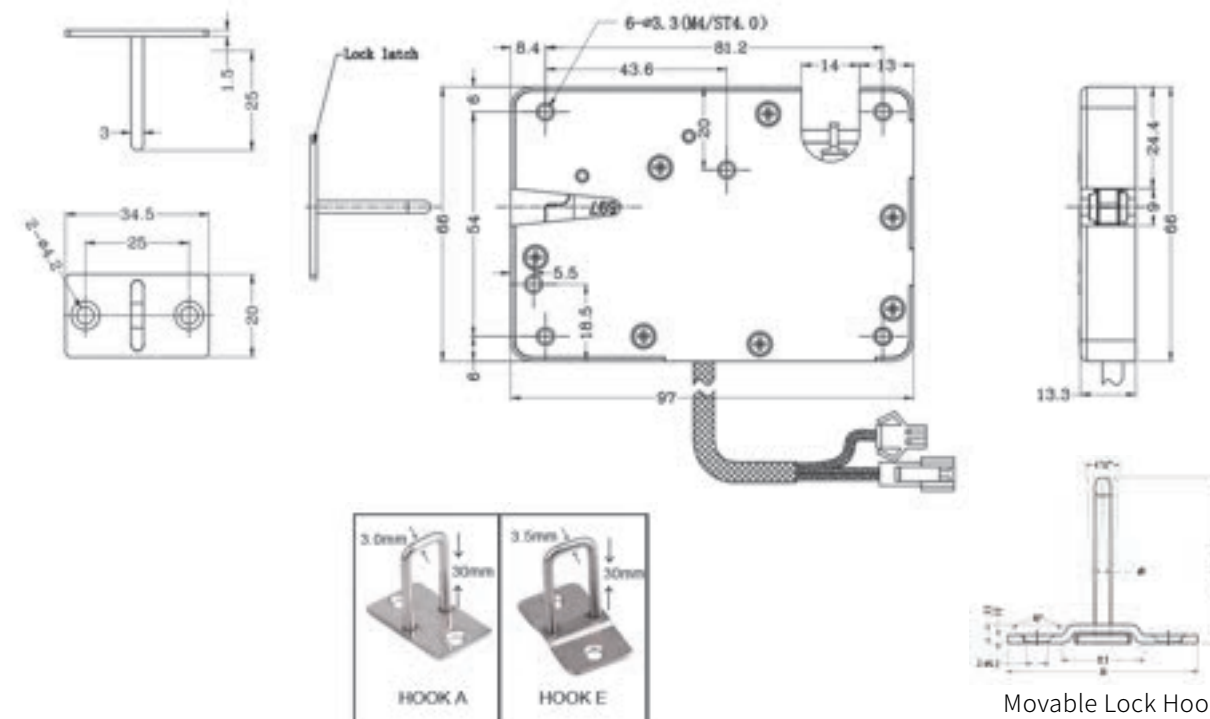


Material of lock body	Zinc Alloy
Material of lock tongue	Zinc Alloy
Voltage	12V&24V
Current	100mA@12V
Power consumption	1.2w
Maximum tensile strength	200KG
Waterproof level	/



KR-S97

- AWG24 wires with PVC protecting tube.
- Solenoid driven, support 12V&24V.
- Anti-force performance as 110kgf.
- Omron detective switch from Japan, working life as 500,000 times.
- Mechanical emergency lever, can be unlocked manually in case of power failure.
- Support customizing wires and connectors.
- Push lever help you push door open, push strength can be adjusted.
- Can be waterproof, all electronic parts are protected into a waterproof box, IP rating as IP66.



Material of lock body	PA+GF
Material of lock tongue	Zinc Alloy
Voltage	12V&24V
Current	2.4A/1.2A
Power consumption	28W
Maximum tensile strength	80KG
Waterproof level	IP66

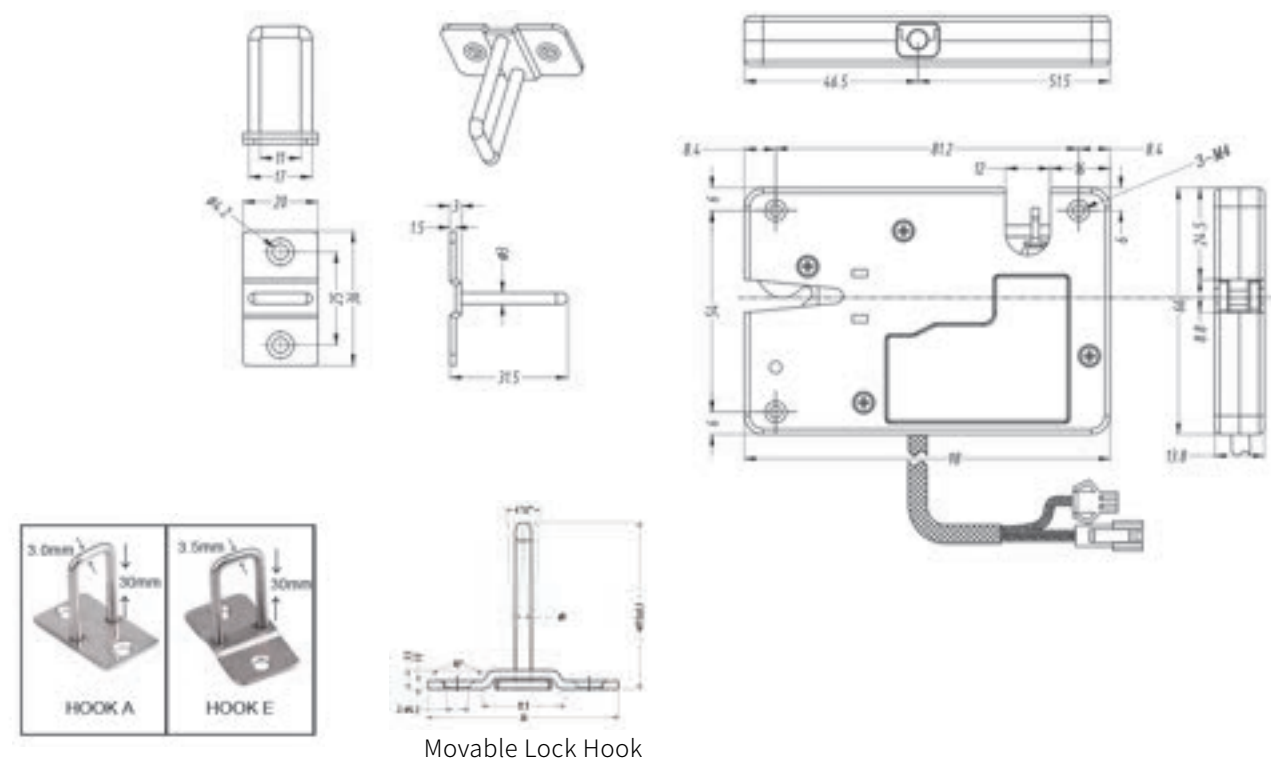


Movable Lock Hook



KR-S98C

- AWG24 wires with PVC protecting tube.
- Solenoid driven, support 12V&24V.
- 430 stainless steel, Zinc Alloy lock tongue, can pass more than 48 hours salt spray test.
- Mechanical emergency lever, can be unlocked manually in case of power failure.
- Omron detective switch from Japan, with working life as 500,000 times.
- Can be waterproof, all electronic parts are protected in the ABS box, IP rating is IP66.
- Support customizing wires and connectors.



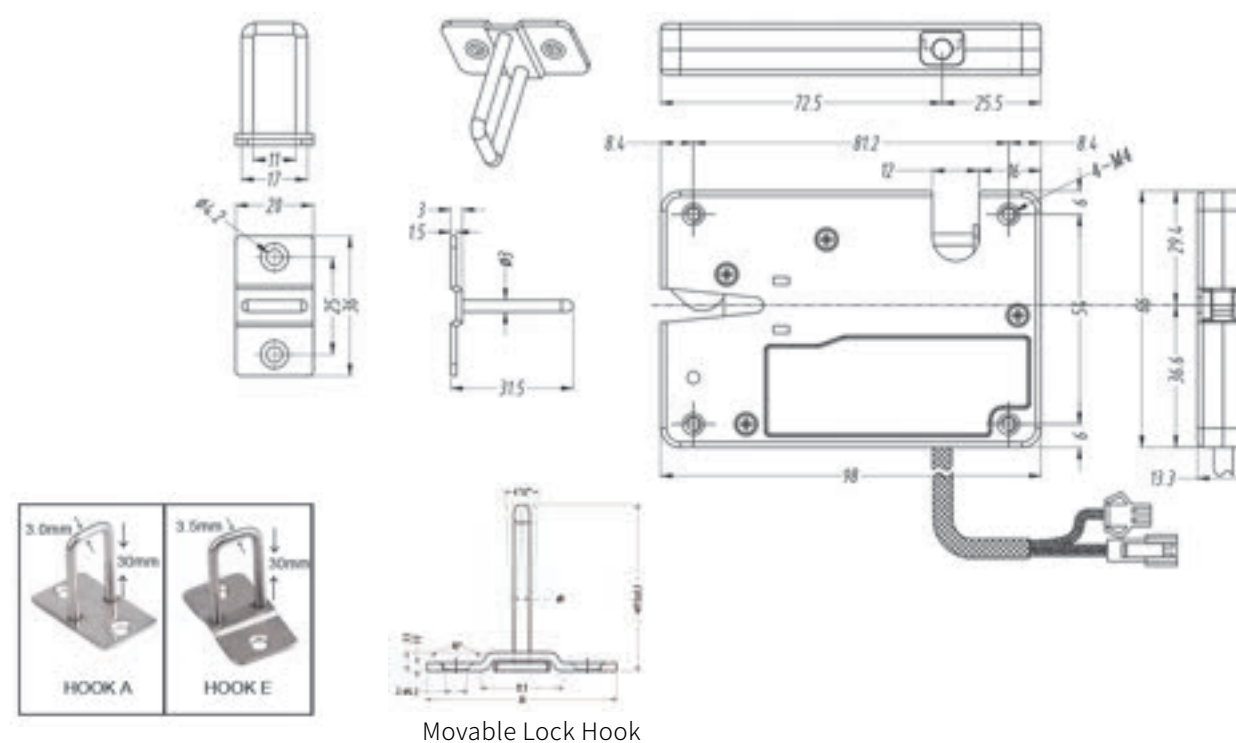
Movable Lock Hook

Material of lock body	304 Stainless steel+PA+GF
Material of lock tongue	Zinc Alloy
Voltage	12V&24V
Current	2.4A/1.2A
Power consumption	28W
Maximum tensile strength	300KG
Waterproof level	IP66



KR-S98A

- AWG24 wires with PVC protecting tube.
- Motor driven, low power consumption, more stable.
- 430 stainless steel, Zinc Alloy lock tongue, can pass more than 48 hours salt spray test.
- Mechanical emergency lever, can be unlocked manually in case of power failure.
- Omron detective switch from Japan, with working life as 500,000 times.
- Can be waterproof, all electronic parts are protected in the ABS box, IP rating is IP66.
- Support customizing wires and connectors.



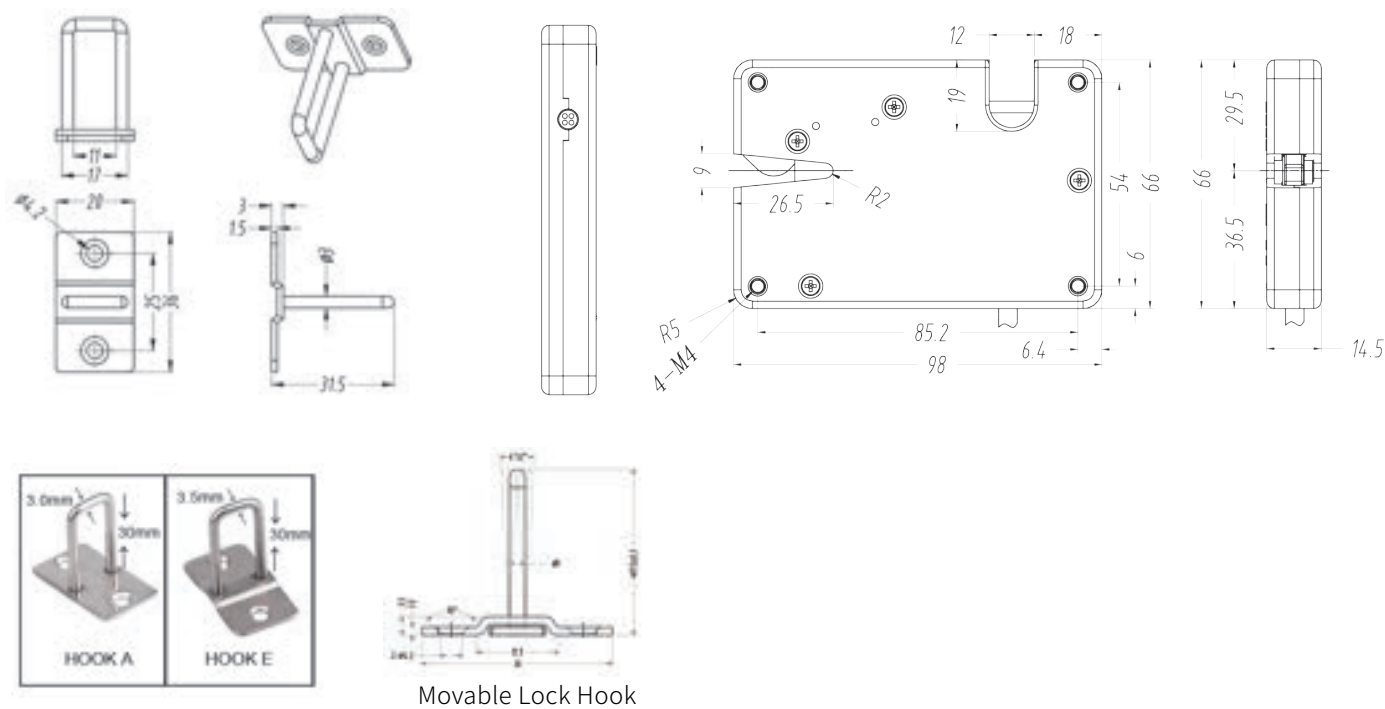
Movable Lock Hook

Material of lock body	304 Stainless steel+PA+GF
Material of lock tongue	Zinc Alloy
Voltage	8V-24V
Current	100mA@12V
Power consumption	1.2W
Maximum tensile strength	300KG
Waterproof level	IP66



KR-S98S

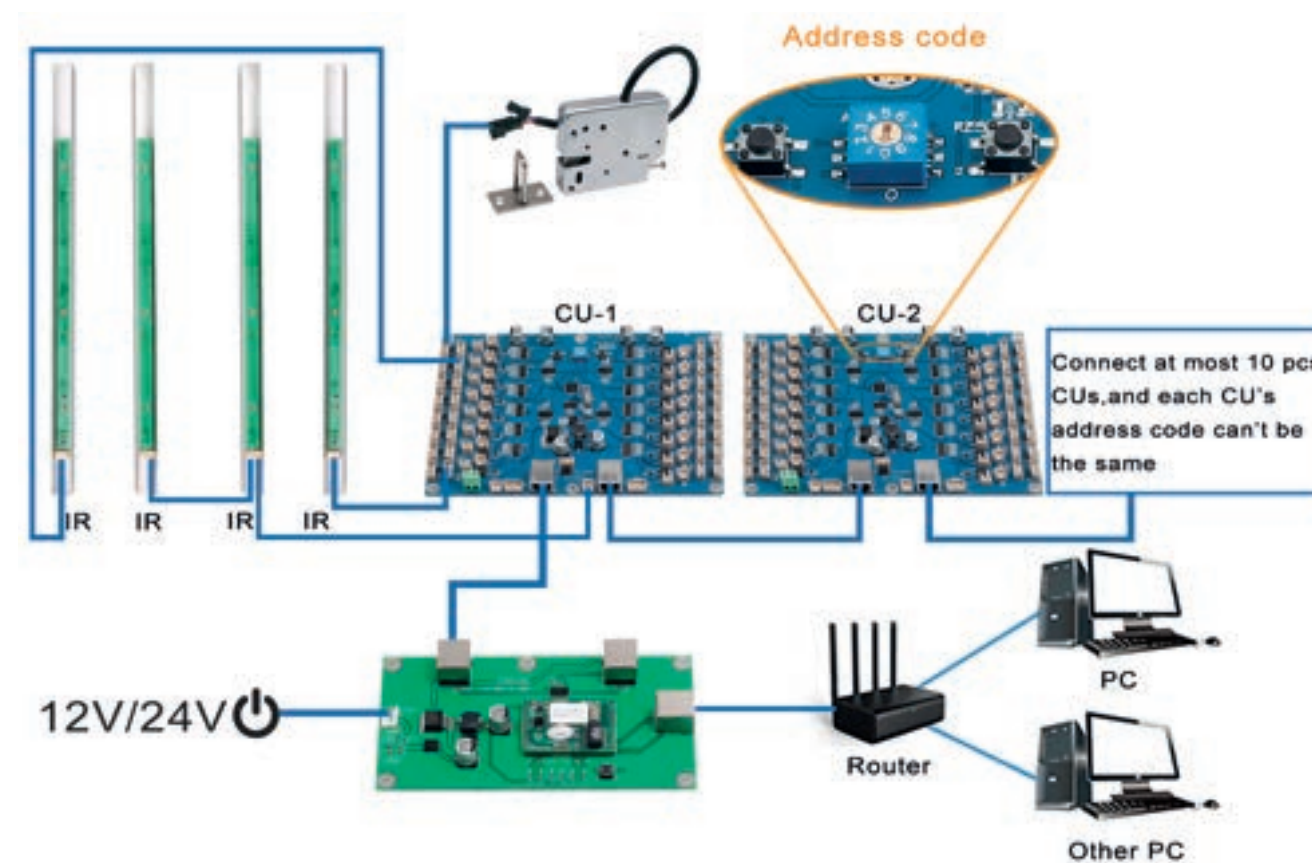
- Motor/servo driven, wide working voltage range: 8~24V. Low power consumption.
- Waterproof rating - IP66.
- It is recommended that the user's power supply unlocking time is greater than 500ms (uninterrupted).
- Omron micro detective switch from Japan, high quality and durability.
- Mechanical emergency lever, can be unlocked manually in case of power failure.
- AWG24 wires with PVC protecting tube.
- Support customizing wires and connectors.



Material of lock body	ABS+PC
Material of lock tongue	Zinc Alloy
Voltage	8V-24V
Current	220mA@12V
Power consumption	2.2W
Maximum tensile strength	200 KG
Waterproof level	IP66

**KR-BU**

- Transfer network communication with TCP/IP commands (from PC) Convert to RS485 format (to CU).
- Open development, completely free to design software.
- Can work with computer, pad, Raspberry Pi.
- Works well on IOS, Windows and Linux.
- Working temperature: -25°C ~65°C .
- With protective case, dustproof.
- High quality modules, stable work.



Function	Connect with Internet, transfer command to lock control board
Micro processor module	Module for converting TCP IP into RS485
Connector model	RJ45,8P8C
Working voltage	12V~24V
Stand-by power consumption	80mA(12V),40mA(24V)
Dynamic power consumption	100mA(12V),50mA(24V)

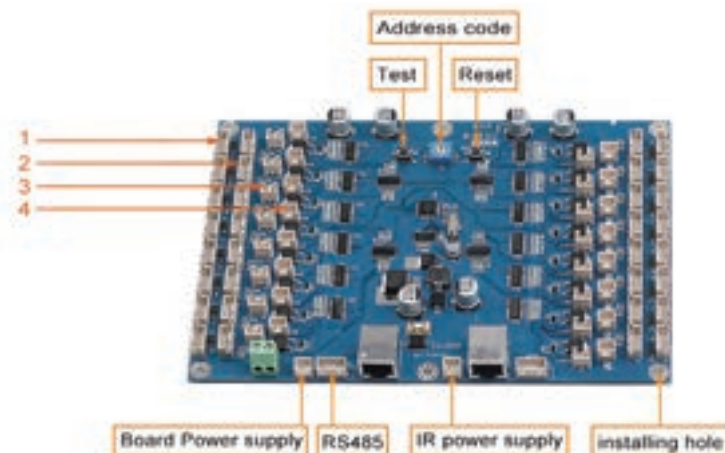


KR-CU

- Lock control board, execute the command from PC and get feedback the status to PC
- Open developed, you can design software completely as you want.
- Support communication method: RS485.
- Can work with computers, Pad, Raspberry Pi.
- Suitable for IOS, Windows and Linux.
- Working temperature: -25°C ~65°C .
- With protective box, dustproof.
- High quality modules for stable operation.



- 1、connecting locks, supply power to locks and detect lock's condition (open/close);
- 2、connecting IR and LED light; IR to check is the locker empty or not; LED light to lighting the locker when lock is open;
- 3、connecting IR feedback light(bi-color); light can be extended to every single locker. Locker is empty, light turns green; locker is occupied, light turns red.
- 4、connecting lock feedback light; light can be extended to every single locker, to show whether the lock is closed or not. Lock open, light turns on; lock close, light turns off.



Function	Control locks and feedback lock status
Micro processor module	STM8S103K3T6 QFP32(P0.8mmBS77mm)
Connector model	RJ45, 8P8C
Working voltage	12V~24V
Stand-by power consumption	70mA(12V), 40mA(24V)
Dynamic power consumption	Max 3000MA
Reaction time	Less than 1s
Working humidity	10%~90%RH
Communication way	RS485

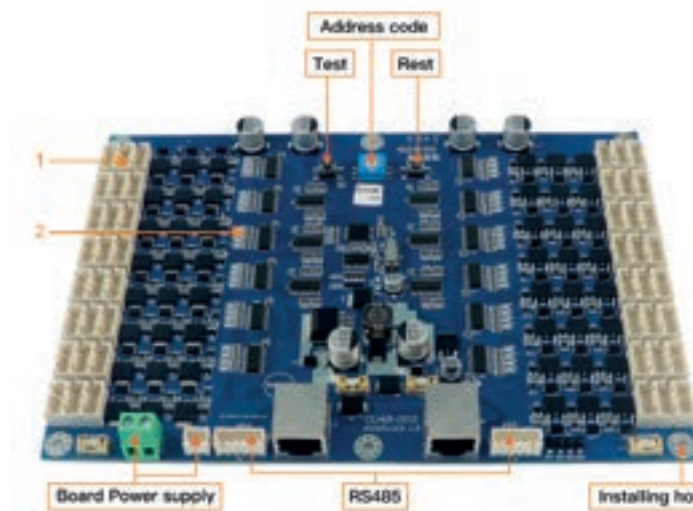
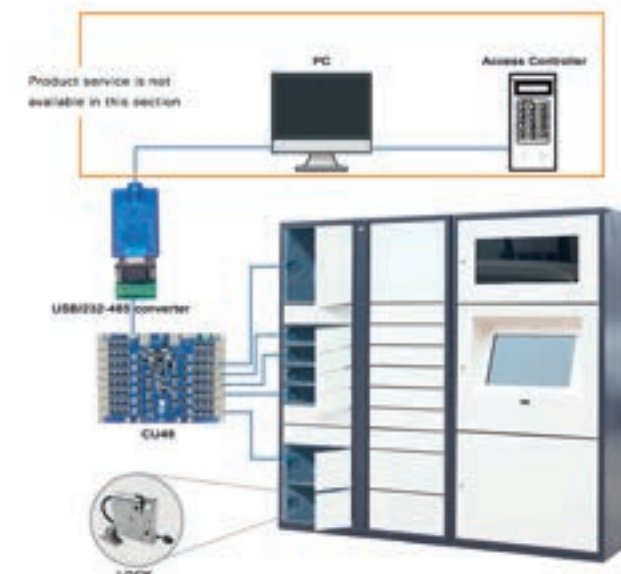


KR-CU48

- Used to control the lock, supply power to locks and detect lock's condition (open/close); 48 locks can be connected.
- Open developed, you can design software completely as you want.
- Support communication method: RS485.
- Can co-work with computer, pad, Raspberry Pi.
- Works well on IOS, Windows and Linux.
- Working temperature: -25°C ~65°C .
- With protect box, anti-dust.
- High quality modules, working stably.



1. connecting locks, supply power to locks and detect lock's condition (open/close);
2. LED for hook detective. Detective switch is on, red LED off; detective switch is off, red LED on.



Function	Control locks and feedback lock status
Micro processor module	STM8S103K3T6 QFP32(P0.8mmBS77mm)
Connector model	RJ45, 8P8C
Working voltage	12V~24V
Stand-by power consumption	70mA(12V), 40mA(24V)
Dynamic power consumption	Max 3000MA
Reaction time	Less than 1s
Working humidity	10%~90%RH
Communication way	RS485

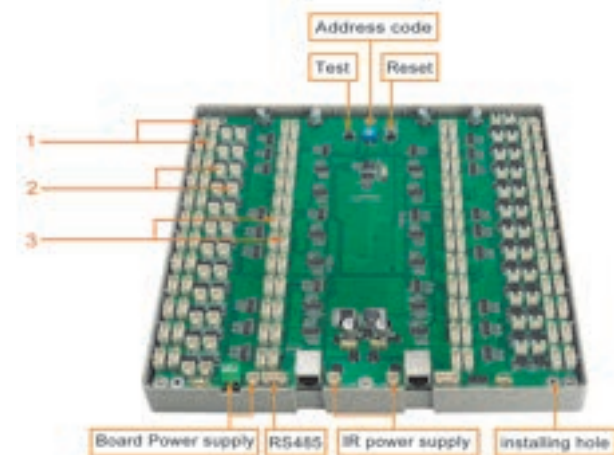
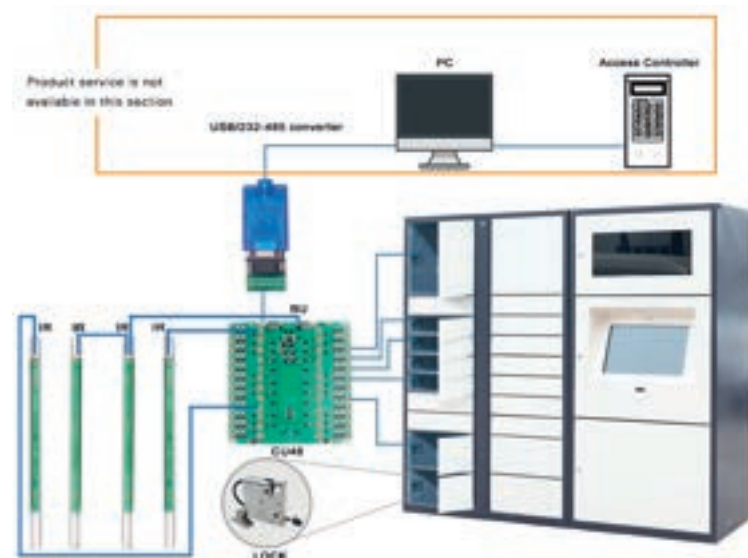


KR-CU48B

- Lock control board, execute the command from PC and get feedback the status to PC, 48 locks can be connected.
- Open developed, you can design software completely as you want.
- Support communication method: RS485.
- Can co-work with computer, pad, Raspberry Pi.
- Works well on IOS, Windows and Linux.
- Working temperature: -25°C ~65°C .
- With protect box, anti-dust.
- High quality modules, working stably.



1. connecting locks, supply power to locks and detect lock's condition (open/close);
2. connecting lock feedback light; light can be extended to every single locker, to show whether the lock is closed or not.
Lock open, light turns on; lock close, light turns off.
3. connecting IR and LED light; IR to check is the locker empty or not; LED light to lighting the locker when lock is open;

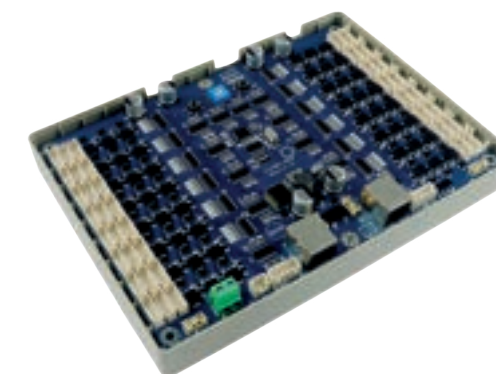


Function	Control locks and feedback lock status
Micro processor module	STM8S103K3T6 QFP32(P0.8mmBS77mm)
Connector model	RJ45, 8P8C
Working voltage	12V~24V
Stand-by power consumption	70mA(12V),40mA(24V)
Dynamic power consumption	Max 3000MA
Reaction time	Less than 1s
Working humidity	10%~90%RH
Communication way	RS485

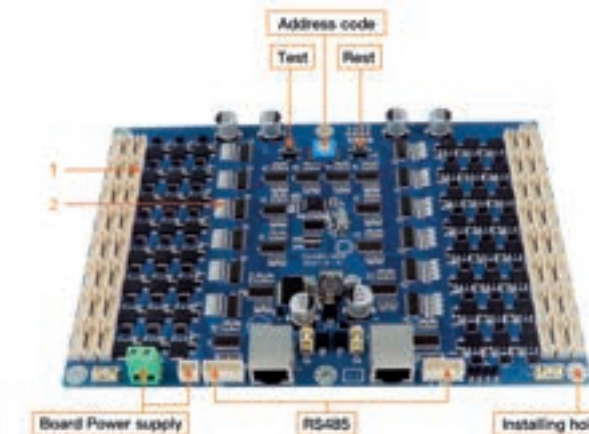
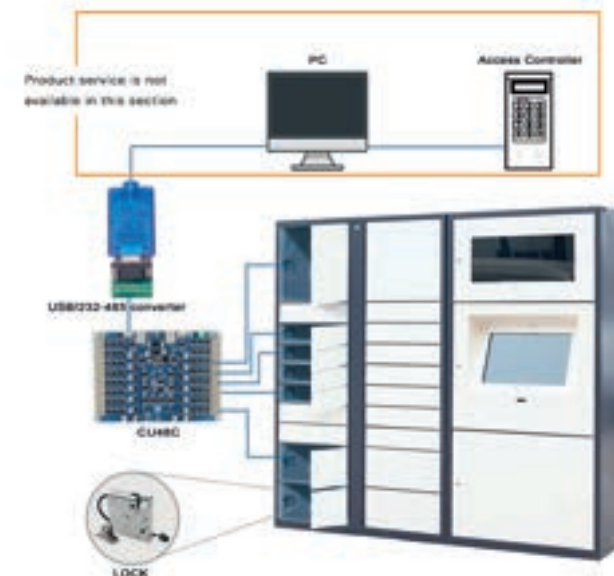


KR-CU48C

- Lock the control board, execute commands from the PC and get feedback status to the PC, 48 locks can be connected.
- Open development, you can design software completely as you like.
- Support communication method: RS485.
- It can work with computer, pad, raspberry pie.
- It runs well on IOS, Windows and Linux.
- Working temperature: -25° C ~65° C.
- With protective box, dust proof.
- High-quality modules, stable work.



1. Connect the lock, supply power to the lock, and check the state of the lock (open/close)
2. Connect the lock feedback light; the light can be extended to each locker to show whether the lock is closed.



Function	Control locks and feedback lock status
Micro processor module	STM8S103K3T6 QFP32(P0.8mmBS77mm)
Connector model	RJ45, 8P8C
Working voltage	12V~24V
Stand-by power consumption	70mA(12V),40mA(24V)
Dynamic power consumption	Max 3000MA
Reaction time	Less than 1s
Working humidity	10%~90%RH
Communication way	RS485

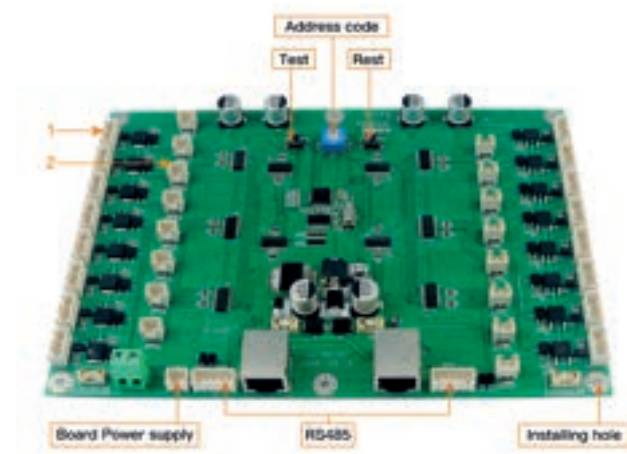
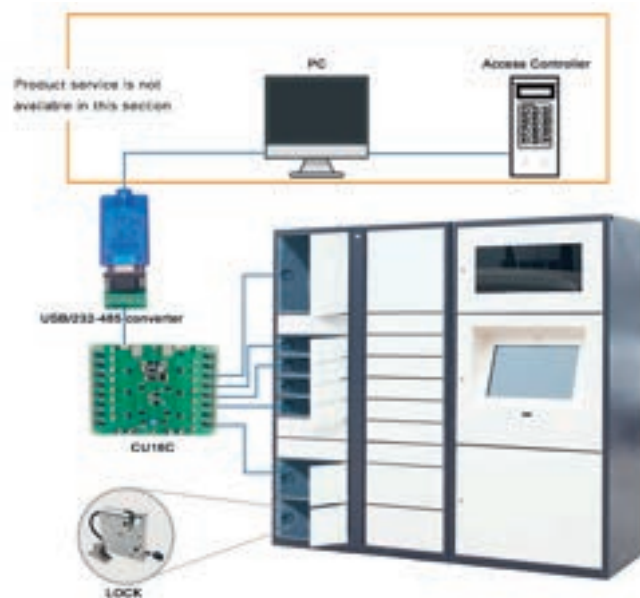


KR-CU16C

- Lock the control board, execute the command from the PC and get the feedback status to the PC, 16 locks can be connected.
- Open development, you can design software completely as you like.
- Support communication method: RS485.
- It can work with computer, pad, raspberry pie.
- It runs well on IOS, Windows and Linux.
- Working temperature: -25° C ~65° C.
- With protective box, dust proof.
- High-quality modules, stable work.



1. Connect the lock, supply power to the lock, and check the state of the lock (open/close)
2. Connect the lock feedback light; the light can be extended to each locker to show whether the lock is closed.
When the lock is open, the light is on; when the lock is closed, the light is off



Function	Control locks and feedback lock status
Micro processor module	STM8S103K3T6 QFP32(P0.8mmBS77mm)
Connector model	RJ45, 8P8C
Working voltage	12V~24V
Stand-by power consumption	70mA(12V), 40mA(24V)
Dynamic power consumption	Max 3000MA
Reaction time	Less than 1s
Working humidity	10%~90%RH
Communication way	RS485

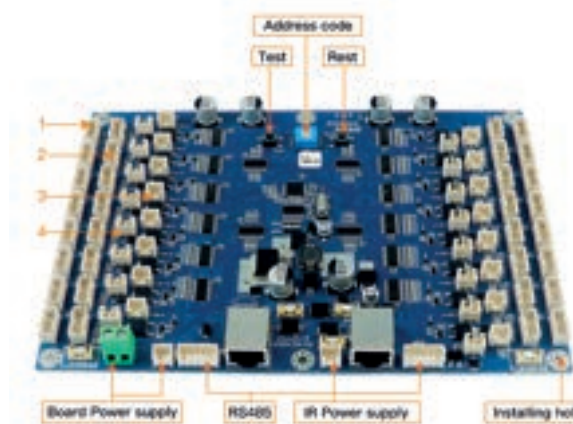
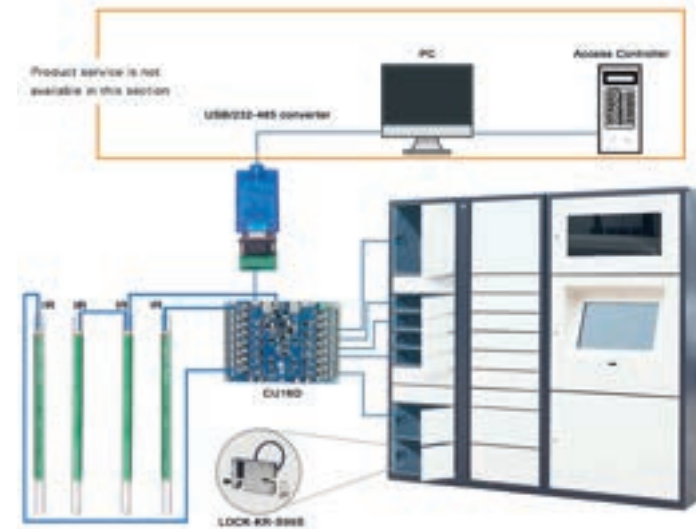


KR-CU16D

- Lock the control board, execute the command from the PC and get the feedback status to the PC, 16 locks can be connected.
- Open development, you can design software completely as you like.
- Support communication method: RS485.
- It can work with computer, pad, raspberry pie.
- It runs well on IOS, Windows and Linux.
- Working temperature: -25° C ~65° C.
- With protective box, dust proof.
- High-quality modules, stable work.



1. connecting locks, supply power to locks and detect lock's condition (open/close);
2. connecting IR and LED light; IR to check is the locker empty or not; LED light to lighting the locker when lock is open;
3. connecting IR feedback light(bi-color); light can be extended to every single locker. Locker is empty, light turns green; locker is occupied, light turns red.
4. connecting lock feedback light; light can be extended to every single locker, to show whether the lock is closed or not.
Lock open, light turns on; lock close, light turns off.

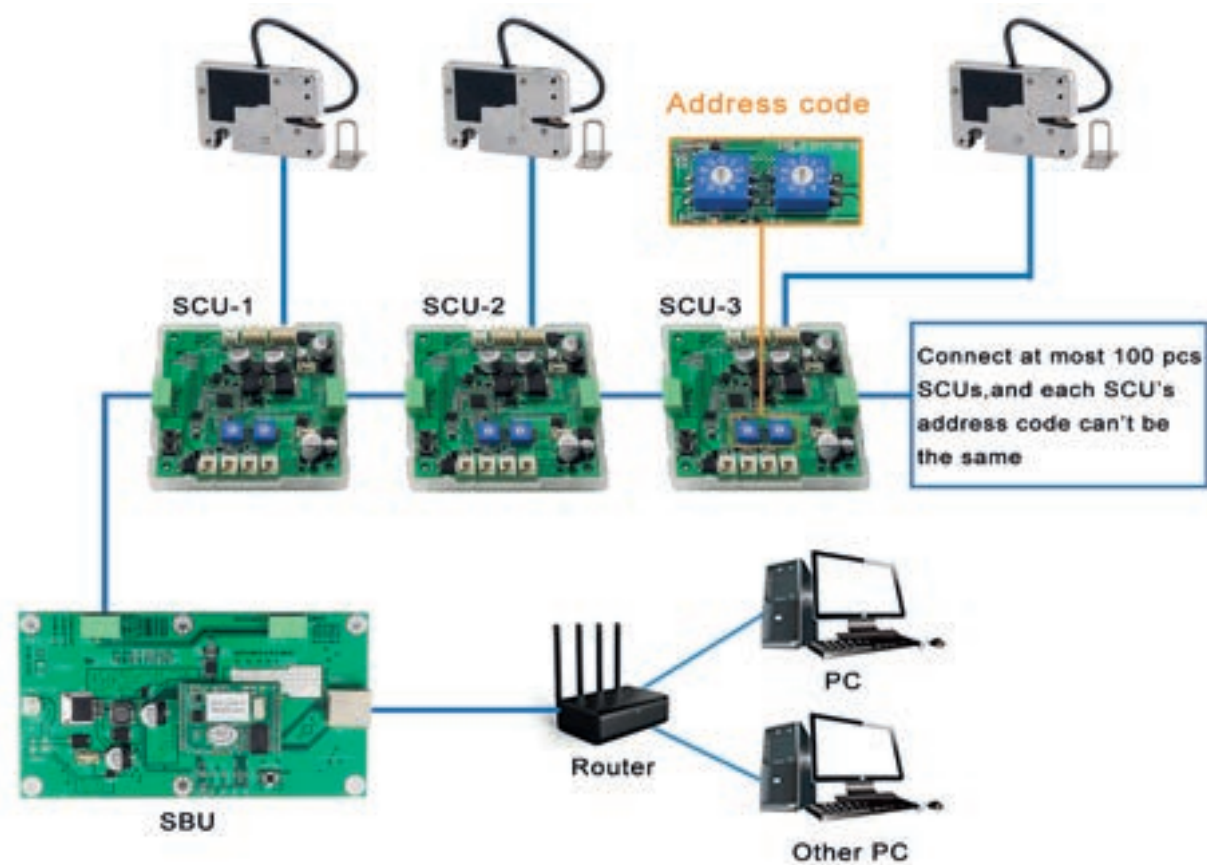


Function	Control locks and feedback lock status
Micro processor module	STM8S103K3T6 QFP32(P0.8mmBS77mm)
Connector model	RJ45, 8P8C
Working voltage	12V~24V
Stand-by power consumption	70mA(12V), 40mA(24V)
Dynamic power consumption	Max 3000MA
Reaction time	Less than 1s
Working humidity	10%~90%RH
Communication way	RS485



KR-SBU

- Transfer network communication with TCP/IP commands (from PC)
Convert to RS485 format (to CU).
- Open developed, you can design software completely as you want.
- Can co-work with computer, pad, Raspberry Pi.
- Works well on OS. Windows and Linux.
- Working temperature: -25°C ~65°C .
- With protect box, anti-dust.
- High quality modules, working stably.

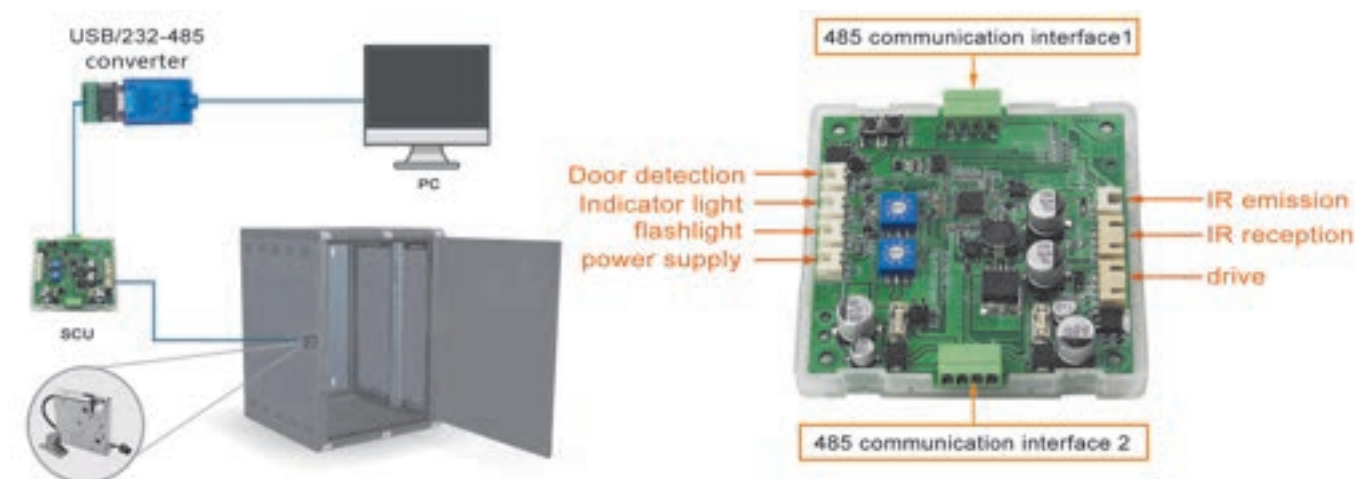


Function	Connect with Internet, transfer command to lock control board
Micro processor module	Module for converting TCP IP into RS485
Connector model	RJ45, 8P8C
Working voltage	12V~24V
Stand-by power consumption	80mA(12V), 40mA(24V)
Dynamic power consumption	100mA(12V), 50mA(24V)



KR-SCU

- For network communication Transfer TCP / IP commands (from PC) to 485 format (to SCU).
- Open developed, you can design software completely as you want.
- Support communication method: RS485.
- Can work with computers, Pad, Raspberry Pi.
- Suitable for IOS, Windows and Linux.
- Working temperature: -25°C ~65°C .
- With protective box, dustproof.
- High quality modules for stable operation.



1. connecting locks, supply power to locks and detect lock's condition (open/close);
2. connecting IR and LED light; IR to check is the locker empty or not; LED light to lighting the locker when lock is open;
3. connecting IR feedback light (bi-color); light can be extended to every single locker. Locker is empty, light turns green; locker is occupied, light turns red.
4. connecting lock feedback light; light can be extended to every single locker, to show whether the lock is closed or not. Lock open, light turns on; lock close, light turns off.

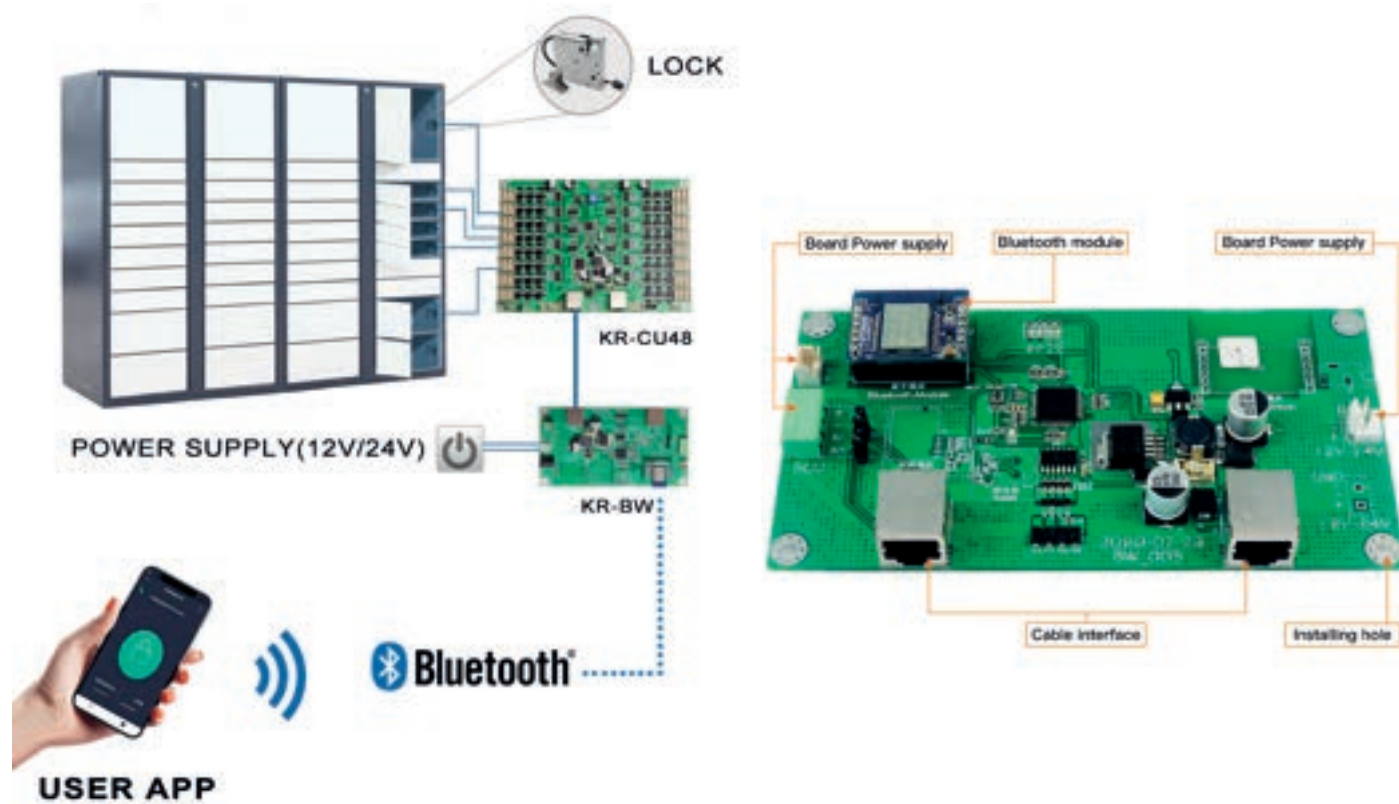
Function	Control locks and feedback ock status
Micro processor module	STM8S103K3T6 QFP32(P0.8mmBS77mm)
Connector model	RJ45, 8P8C
Working voltage	12V~24V
Standby power consumption	20mA
Dynamic power consumption	Max 3000MA
Reaction time	Less than 1s
Working humidity	10%-90%RH
Communication way	RS485





KR-BW

- Used for network communication to transmit TCP/IP commands (from PC) to 485 format (CU).
- Open development, you can design software completely as you like.
- Support Bluetooth connection.
- It can work with computer, pad, raspberry pie.
- It runs well on IOS, Windows and Linux.
- Working temperature: -25° C~65° C.
- With protective box, dust proof.
- High-quality modules, stable work.

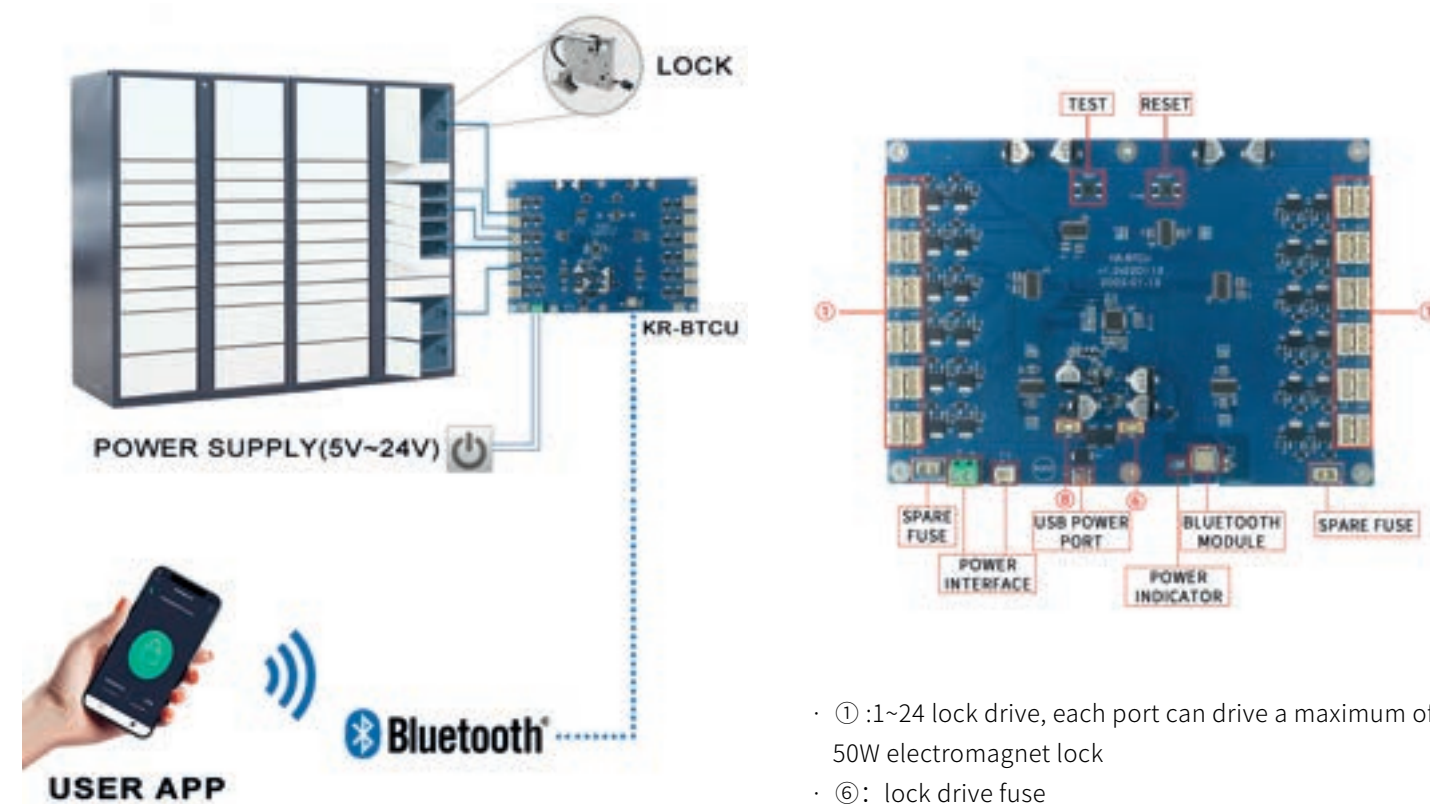


Function	Connect with Internet, transfer command to lock control board
Micro processor module	Module for converting TCP IP into RS485
Connector model	RJ45,8P8C
Working voltage	12V~24V
Stand-by power consumption	80mA(12V),40mA(24V)
Dynamic power consumption	100mA(12V),50mA(24V)



KR-BTCU

- The mobile phone Bluetooth connection controls the electric lock.
- Open development, completely free to design software.
- High-quality modules, stable work.
- Working temperature: -25°C ~65°C .
- With protective box, dustproof.
- It can control 24 locks at the same time.

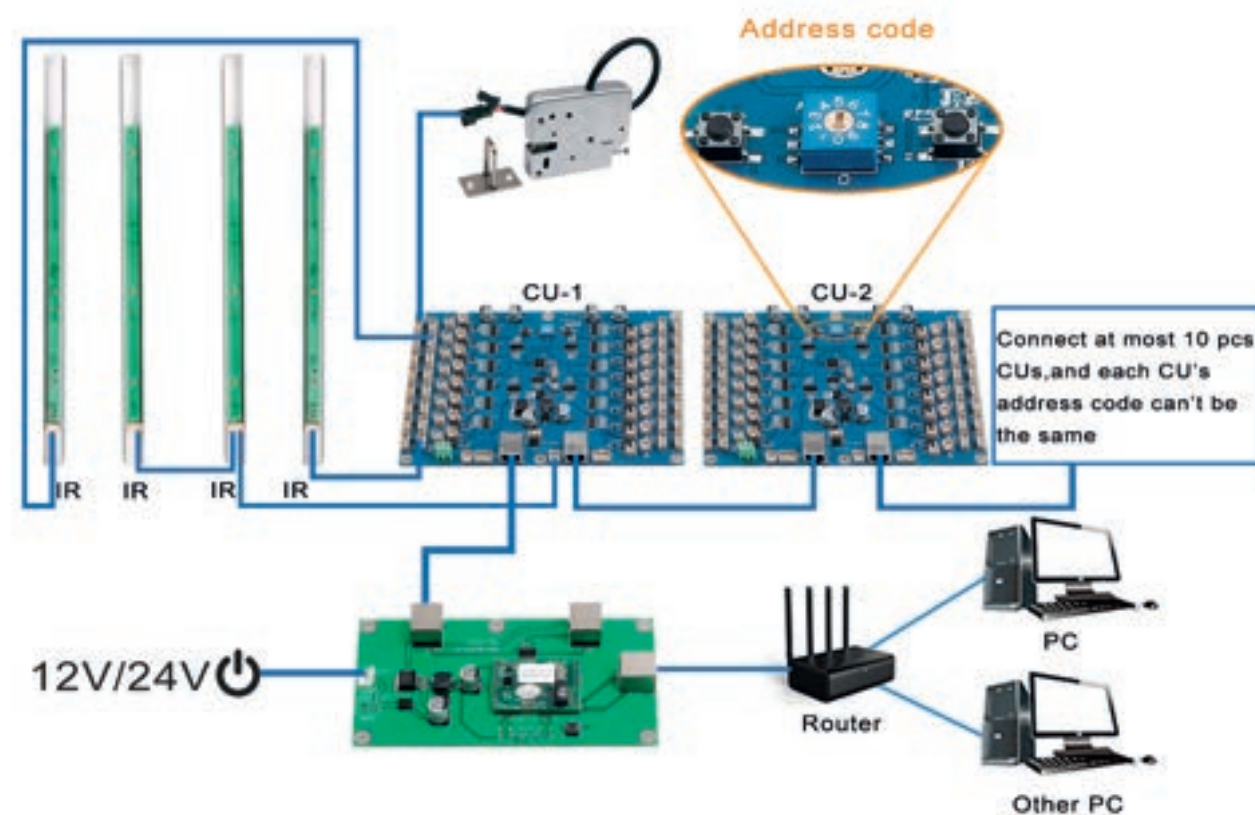


Function	Connect with Internet, transfer command to lock control board
Micro processor module	Module for converting TCP IP into RS485
Connector model	RJ45,8P8C
Working voltage	12V~24V
Stand-by power consumption	80mA(12V),40mA(24V)
Dynamic power consumption	100mA(12V),50mA(24V)



KR-IR

- Co-work with CU.
- Detecting locker is empty or occupied.
- Supplying light when lock is unlocked, locker is opened.
- Support customizing dimension and color for various locker designs.
- Easy installation With locker design drawings. for better reference.



Material	PCB(Printed Circuit Board)+cold rolled plate
Maximum detecting distance	500mm
Function	Detect locker is empty or occupied; supply light when locker is opened
Detector quantity	4 detectors
Connector model	XH2.544P; XH2.542P
Working voltage	12V~24V

Power Adapter

- Connect with power directly, convert 220V-240V power into 12V or 24V then supply power to control board and lock
- Can offer suitable plug according to customers' requirements



RS485-USB Adaptor

- Connect with PC, transfer commands from PC to lock control board



Cable for lock to CU

- Connect lock and CU board
- Support customized connector model and cable length





Emergency unlocking line



LED indicator



Power cable for BU



Cable for IR to CU



RS485-232 Adaptor



Power cable for CU



Ethernet Cable



Model	KR-S66	KR-S66N	KR-S99	KR-S99N	KR-S1408	KR-S5243	KR-S97	KR-S98C
Surface treatment	/	/	/	/	/	/	/	Passivation
Material of lock body	430 stainless steel	430 stainless steel	430 stainless steel	430 stainless steel	430 stainless steel	Zinc alloy	ABS+PC	430 stainless steel+ABS
Material of lock tongue	Zinc alloy	Zinc alloy	Zinc alloy	Zinc alloy	Zinc alloy	Zinc alloy	Zinc alloy	Zinc alloy
Material of hook	304 stainless steel	304 stainless steel	304 stainless steel	304 stainless steel	304 stainless steel	304 stainless steel	304 stainless steel	304 stainless steel
Color	Silver	Silver	Silver	Silver	Silver	Gold	White/Black	Silver
Size	56*66*13.5mm	67*59*13.5mm	67*72.5*13.5mm	69*72.5*13.5mm	72.5*59*13mm	52*43*14.5mm	97*66*13.3mm	98*66*13.3mm
Weight with lock hook	158g	182g	196g	201g	176g	126g	127g	197g
Lock weight	146g	170g	184g	189g	164g	113.3g	115g	185g
Hook weight	A: 11.0g B: 10.5g C: 10.8g D: 11.8g E: 11.4g F: 10.5g	A: 11.0g B: 10.5g C: 10.8g D: 11.8g E: 11.4g F: 10.5g	A: 11.0g B: 10.5g C: 10.8g D: 11.8g E: 11.4g F: 10.5g	A: 11.0g B: 10.5g C: 10.8g D: 11.8g E: 11.4g F: 10.5g	A: 11.0g B: 10.5g C: 10.8g D: 11.8g E: 11.4g F: 10.5g	A: 11.0g B: 10.5g C: 10.8g D: 11.8g E: 11.4g F: 10.5g	A: 11.0g B: 10.5g C: 10.8g D: 11.8g E: 11.4g F: 10.5g	A: 11.0g B: 10.5g C: 10.8g D: 11.8g E: 11.4g F: 10.5g
With or without push lever	/	✓	✓	✓	/	/	✓(built-in)	✓(built-in)
Anti-force performance	270KG	270KG	240KG	240KG	240KG	200KG	80KG	300KG
Door weight	0.5KG~10KG	0.5KG~10KG	0.5KG~10KG	0.5KG~10KG	0.5KG~10KG	0.5KG~10KG	0.5KG~10KG	0.5KG~10KG
Whether with door magnetic detection	/	/	/	/	/	/	/	/
Working Principle	Power-on unlock	Power-on unlock	Power-on unlock	Power-on unlock	Power-on unlock	Power-on unlock	Power-on unlock	Power-on unlock
Signal detection working mode	Lock states feedback	Lock states feedback	Lock states feedback	Lock states feedback	Lock states feedback	Lock states feedback	Lock states feedback	Lock states feedback
Working voltage	12V/24V	12V/24V	12V/24V	12V/24V	12V/24V	12V/24V	12V/24V	12V/24V
Maximum power	28W	28W	28W	28W	28W	28W	28W	28W
Working current	2.4A/1.2A	2.4A/1.2A	2.4A/1.2A	2.4A/1.2A	2.4A/1.2A	2.4A/1.2A	2.4A/1.2A	2.4A/1.2A
Working temperature	-20℃~+60℃	-20℃~+60℃	-20℃~+60℃	-20℃~+60℃	-20℃~+60℃	-20℃~+60℃	-20℃~+60℃	-20℃~+60℃
Working humidity	5%~85%RH	5%~85%RH	5%~85%RH	5%~85%RH	5%~85%RH	5%~85%RH	5%~85%RH	5%~85%RH
Working life	500,000 times	500,000 times	500,000 times	500,000 times	500,000 times	100,000 times	500,000 times	500,000 times
Response time	<20ms	<20ms	<20ms	<20ms	<20ms	<200ms	<20ms	<20ms
IP rating	/	/	/	/	/	/	IP66	IP66
Test	Salt spray testing 48 hours	Salt spray testing 48 hours	Salt spray testing 48 hours	Salt spray testing 48 hours	Salt spray testing 48 hours	Salt spray testing 48 hours	Salt spray testing 72 hours	Salt spray testing 72 hours
Recommended power-on time	<800ms	<800ms	<800ms	<800ms	<800ms	<500ms	<800ms	<800ms
Detective switch (open/close)	Omron	Omron	Omron	Omron	Omron	Omron	Omron	Omron
Driven method	Solenoid	Solenoid	Solenoid	Solenoid	Solenoid	Solenoid	Solenoid	Solenoid
Elastic power	Strong/weak	Strong/weak	Strong/weak	Strong/weak	Strong/weak	Strong/weak	Strong/weak	Strong/weak
Certification	CE; RoHS	CE; RoHS	CE; RoHS	CE; RoHS	CE; RoHS	CE; RoHS; FCC	CE; RoHS	CE; RoHS

- All locks support customizing wires and connectors.
- Mechanical emergency lever, can be unlocked manually in case of power failure.

