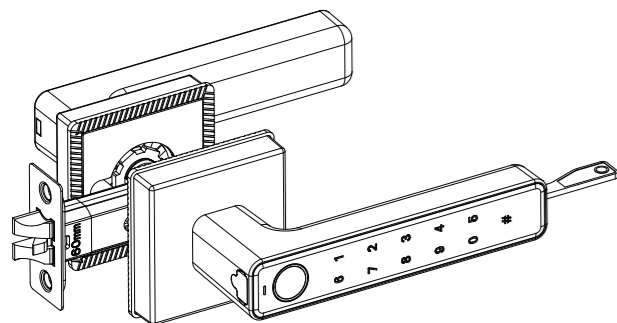


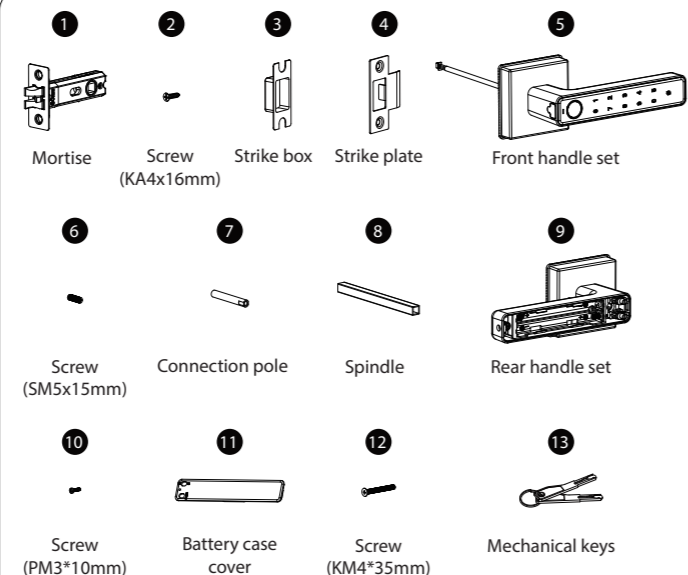
User Manual

Smart Door Lock



V1.0: HLa230626E

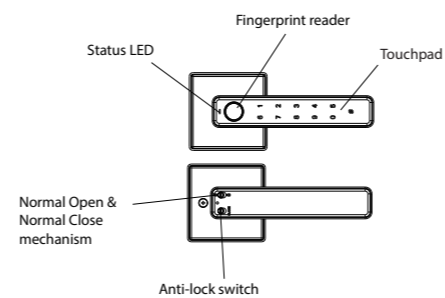
Basic Information Product Components



Input Voltage: 4.5V ~ 5.5V
Operating Temperature: -20°C~+60°C
Storage Temperature: -20°C~+60°C
Operating Humidity: 10% ~ 90%RH
Low Voltage Alarm: ≤3.6V
Charging Interface: Type-C

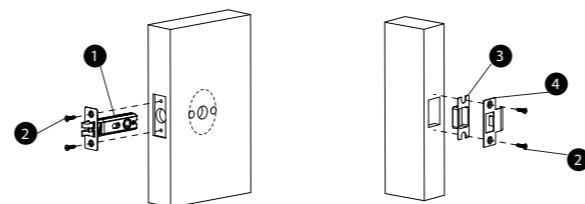
Factory Management Password: 0000
Password: 4-8 Digits

Key components



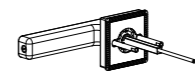
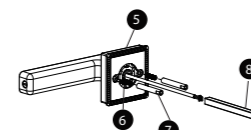
Mortise Installation

1. Insert the mortise into the door.
2. Install the strike box and strike plate into side door.

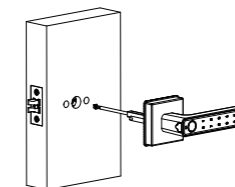


Front Handle Installation

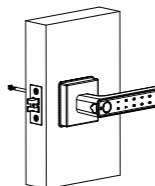
1. Fix the front handle using screws and thread the connection wires through the spindle.



2. Pass the spindle through the door holes and secure the front handle.

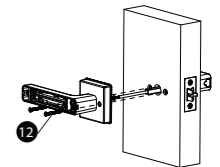
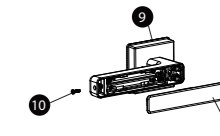


3. Complete the lock installation.

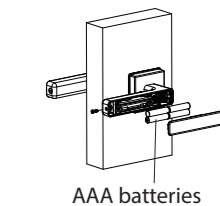


Rear Handle Installation

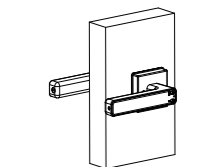
1. Remove the back cover, connect wires from the front handle, and secure the rear handle with screws.



2. Insert four 1.5V AAA alkaline batteries and close the battery case cover.

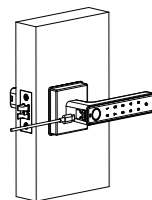


3. Finish the lock installation.

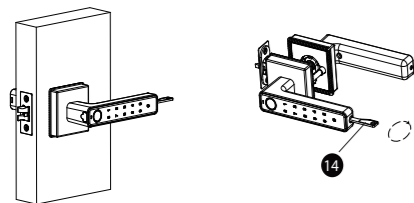


Emergency Power & Unlocking

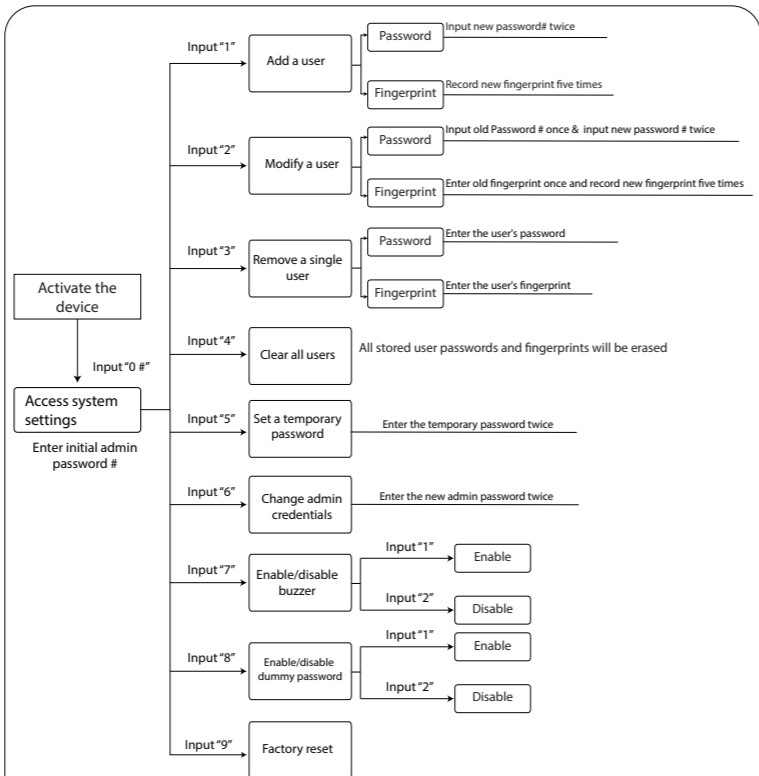
Option A: Insert a power bank or supply into the Type-C interface, power the lock, then use the correct fingerprint/password to unlock. Replace AAA alkaline batteries after unlocking.



Option B: Use the mechanical key for emergency unlocking.

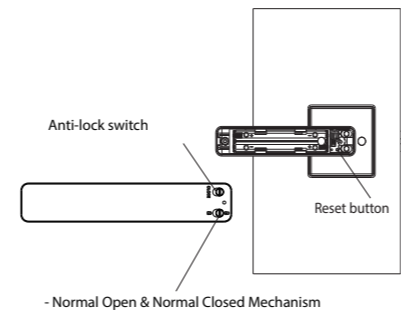


Touchpad Functions



1. While in setting mode, the buzzer will sound once, and the blue light will flash.
2. For each correct and unique fingerprint/password entry, the buzzer will sound once, and the green light will flash.

Additional Features



- Anti-lock (Only in Normal Closed mode): Users cannot open the lock from the outside using fingerprints or a password.

- Normal Open: Rotate the handle to unlock without entering a fingerprint/password

- Normal Closed: Enter fingerprint/password and rotate the handle to unlock

- Reset button: Press for three seconds, five buzzer sounds, two green light flashes, successful lock initialization.

Alarm Notifications

Low battery alarm

- Low battery alarm: If voltage $\leq 4.8V$, the blue light will flash seven times, and the buzzer will beep seven times; replace AAA alkaline battery.



Anti-theft alarm

- Anti-theft alarm: Five incorrect fingerprint entries or three incorrect password entries trigger an alarm; red light flashes.

- Note: During locking, any fingerprint/password entry (except admin) activates the alarm; the admin password cancels the alarm after 180 seconds.



Notes

1. Before registering a fingerprint/password, any input can unlock the lock; red light flashes twice.
2. You have five seconds to rotate the handle and unlock after correct input; otherwise, re-enter the input.
3. After setup, input "#" to exit system settings.
4. Admin, user, and temporary passwords must differ.
5. Configured temporary passwords cannot be deleted or changed.
6. A temporary password becomes invalid after use and does not occupy space.