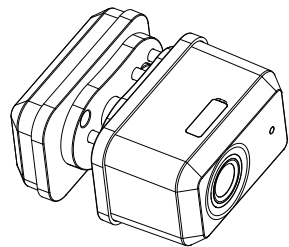


# Instruction Manual



## Smart Trigger Lock

### Introduction

Dear customer

Thank you for purchasing our product. To ensure the proper usage of this product, please carefully read this manual before using it. If you have read the entire manual, we recommend keeping it in a safe place for future reference. This will be beneficial for your continued use of the product.

In the initial state, any fingerprint can unlock the lock. However, once a fingerprint is registered, the lock will only respond to the registered fingerprints and will not be unlocked by any other unregistered fingerprints.

### Content

#### 1. Product Introduction

##### 1.1 Product Instruction

##### 1.2 Product List

#### 2. Fingerprint Reading

#### 3. Configuration

##### 3.1 Register Admin Fingerprint

##### 3.2 Add User Fingerprint

##### 3.3 Delete User Fingerprint

#### 4. Factory Setup

##### 5. Charging Instruction

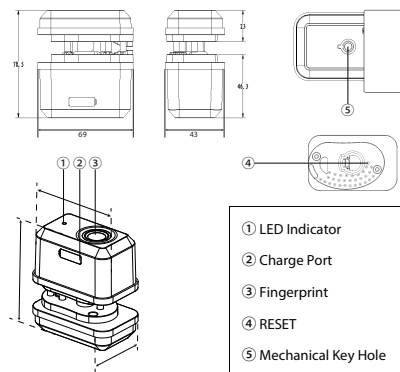
##### 6. Product Information

##### 6.1 Product Specifications

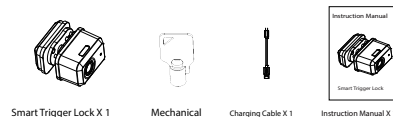
##### 6.2 Product Parameters

### 1. Product Introduction

#### 1.1 Product Instruction



#### 1.2 Product List

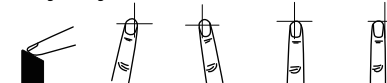


### 2. Fingerprint Reading

Correct reading



Wrong reading



Note:

1. When entering fingerprints, please place your finger on the fingerprint module following the correct method mentioned above. It is important to note that if your finger is excessively dry or if the skin is damaged or worn, it may affect the unlocking process, and the fingerprint entry may fail.

2. Should the red light illuminate during the pressing process, please adjust your finger's position and proceed with the fingerprint entry.

3. If no fingerprint is pressed during the registration process, the system will automatically exit after a 30-second timeout. To continue, you will need to restart the registration process.

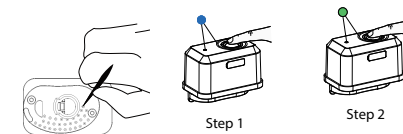
### 3. Configuration

#### 3.1 Register Admin Fingerprint

Way A: Configuration using the RESET Button

Step 1: Press the "RESET" button once, and the blue light will illuminate.

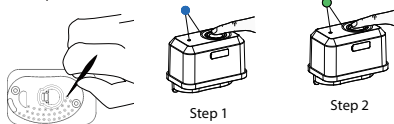
Step 2: While the blue light is lit, register one blank fingerprint as the admin fingerprint six times. With each successful input, the green light will flash once, and the frequency of the blue light blinking will gradually slow down. Configuration is successful when you complete the process six times.



Way B: Configuration using Blank Fingerprint

Step 1: To unlock the lock, use any fingerprint and keep the finger on the sensor until the blue light lights up.

Step 2: While the blue light is lit, input a blank fingerprint that you wish to register as the admin fingerprint six times. With each successful input, the green light will flash once, the frequency of the blue light blinking will slow down incrementally, and the configuration will be considered successful once six acquisitions are completed.



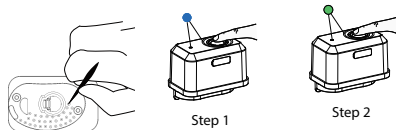
### 3.2.Add User Fingerprint

#### Way A: Configuration using the RESET Button

Step 1: Click "RESET" button once, the blue light will light up.

Step 2: Input the admin fingerprint, and the green light will light up.

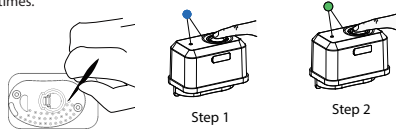
Step 3: While the green light is illuminated, register the blank fingerprint you want to use as the user fingerprint six times. Each successful input will trigger one flash of the green light, decrease the blinking frequency of the blue light, and confirm configuration completion after six successful acquisitions.



#### Way B: Configuration Using Admin Fingerprint

Step 1: Unlock the lock using the admin fingerprint and keep your finger in place until the blue light becomes illuminated.

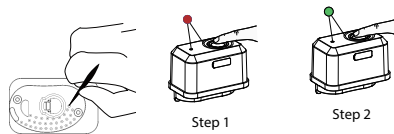
Step 2: While the blue light is lit, register the user fingerprint by pressing your blank finger on the sensor six times. Each successful input will be indicated by a green light flash, a reduction in the blue light blinking frequency, and the configuration will be considered successful once you've completed this process six times.



### 3.3 Delete User Fingerprint

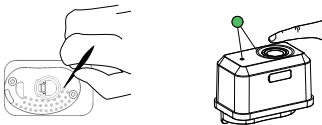
Step 1: Press the "RESET" button twice, and the red light will flash quickly.

Step 2: Input the admin fingerprint, and the green light will shine once, indicating that all user fingerprints have been deleted.



### 4. Factory Setup

Long press the "RESET" button for 5 seconds. The green light will shine twice, and the motor will turn. This indicates that the lock has been successfully reset, and all fingerprints have been deleted.



### 5. Charging instruction

#### Low Battery:

When the lock's battery level drops below 3.6V, the blue light will flash seven times after each unlocking or locking operation. This indicates that the lock has a low battery, and it should be charged promptly.

#### Charging:

While the lock is charging, the red, green, and blue lights will flash alternately.

#### Fully Charged:

Once the lock is fully charged, the green light will remain illuminated.

### 6. Product Information

#### 6.1 Product Specifications

1. Unlock Method: Fingerprint + Mechanical Key
2. Fingerprint Capacity: 50 Fingerprints (1 Admin & 49 Users)
3. Charging Interface: Type-C
4. Standby Time: 1 Year
5. Materials: Zinc Alloy

#### 6.2 Product parameters

Power Supply	430mAh Lithium Battery
Static Current	<20uA
Standby Current	<50mA
Stall Current	<350mA
Load Current	<100mA
Alarm Voltage	≤3.6V
Working Temperature	-20°C ~ 60°C
Storage Temperature	-20°C ~ 60°C
Working Humidity	10%~90%RH

